

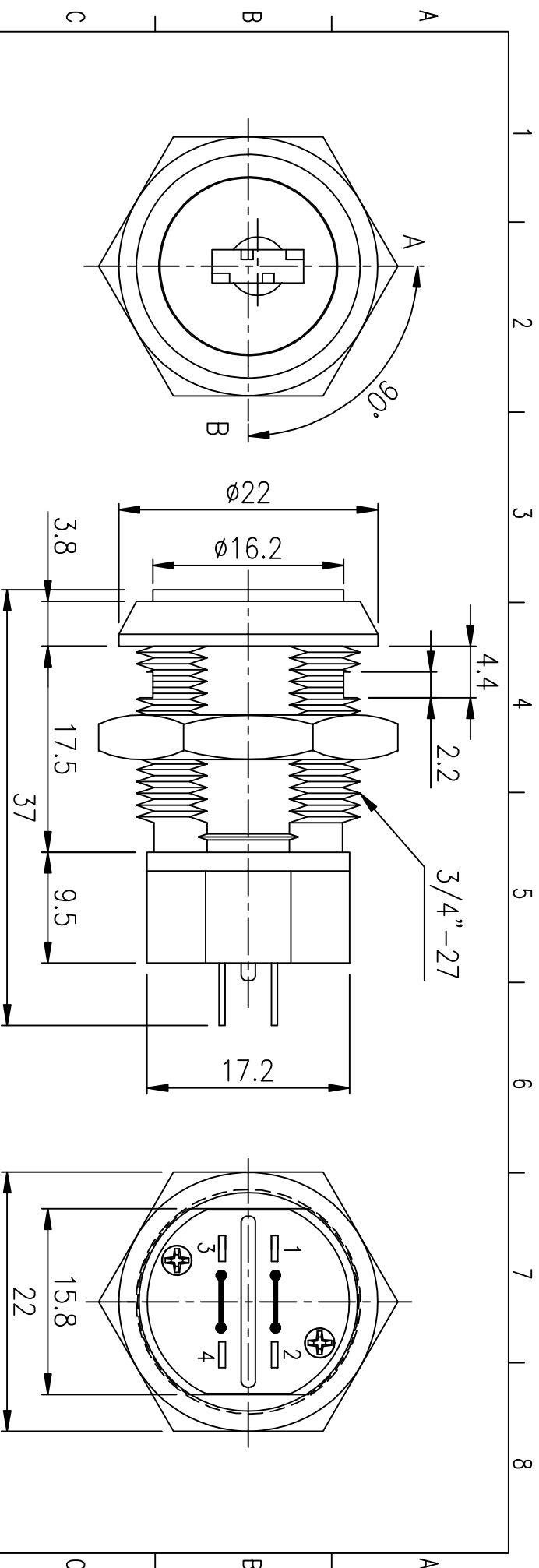
Recommend
hole size

Notes:

- * Zinc alloy die cast housing and cylinder, chrome plated.
- * 5-Disk tumblers mechanism.
- * Reversible double cut key brass made nickel plated.
- * Silver plated contacts and terminals.
- * S286A 2 Positions (off-on) 4 Terminals. (2NO.2NC)
- * S286A-1 ONE KEY PULL AT 12 O'CLOCK ONLY.
- * KEY NO.2801.

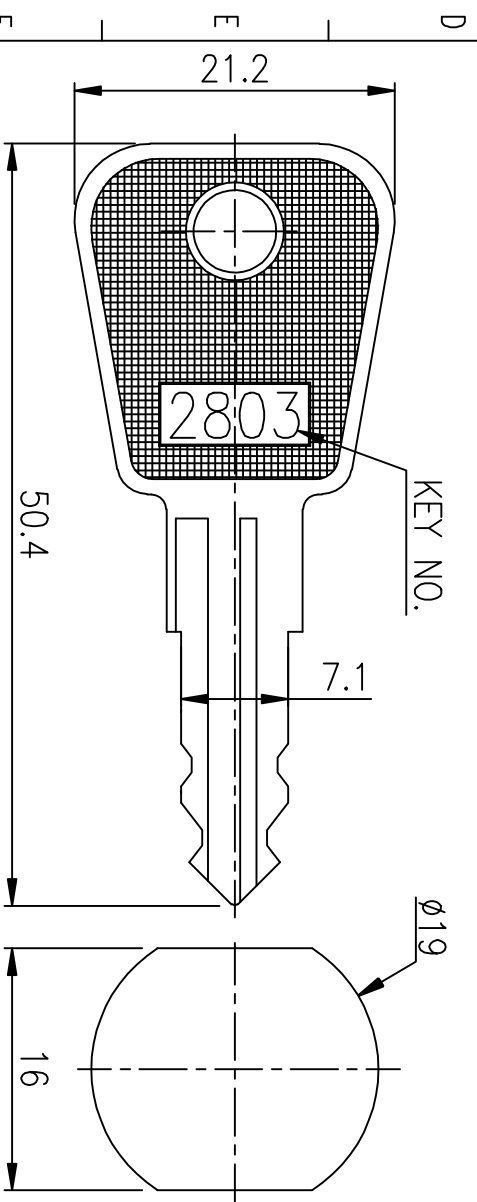
DATE	10.28.08	SCALE	2:1	UNIT	mm	WT. :	g	REV.:	A	DESCRIPTION	SWITCH LOCK
APPROVED BY		CHECKED BY		DRAWN BY		PART NO.	S286A-1	MATERIAL			
REV. NO.	COORDINATES	WAS	NEW	DATE	BY	NOTE					

JICTEN



Notes:

- * Zinc alloy die cast housing and cylinder, chrome plated.
- * Reversible double cut key brass made nickel plated.
- * Silver plated contacts and terminals.
- * S286B 2 Positions (on-on) 4 Terminals.(1NO.1NC)
- * Met with ROHS.
- * KEY NO.:2803.



Recommended hole size

DESCRIPTION	SWITCH LOCK				
PART NO.	S286B-2				
MATERIAL	.				
NOTE					
APPROVED BY		CHECKED BY		DRAWN BY	
TOLERANCES		UNIT	mm	SCALE	2:1
>0	401				
>30	402				
>120	403				
>315	408				
>1000	412				



JICTEN

REV. NO.	COORDINATES	WAS	NEW	DATE	BY	REV.	A	WT.	9	DATE	04.29.09
1						6			7		8